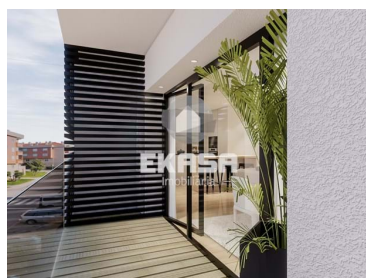




Santa Maria da Feira, Travanca, Sanfins e Espargo - Apartment



 **2**
Bedrooms

 **2**
Bathrooms

 **116**
Area (m²)

240 000 €
(EUR €)

Property Features

- Energetic certification: A

T +351 915 940 000 (Chamada para rede móvel nacional) · E geral@ekasa.pt
Rua Estrada Nacional 1, Edf. Vasco da Gama nº 1149, 4535-214 Mozelos - Santa Maria Da Feira
AMI 9733

¹ (Call to national fixed network) | ² (Call to national mobile network)